



### Dear Parents/Guardians

I hope everyone is keeping safe and well in these most challenging of times. I thought it was timely to once again include the quote below, something we have previously shared in the newsletter. I think it's fair to say 2021 hasn't got off to the best of starts and we all find ourselves shocked and saddened that our pupils aren't in school! However hard this is for us at the moment, the quote reminds us not to give up and certainly not to give up on 2021! It also reminds us of all the things we can keep on doing and sometimes it is good to be reminded of what we can still do!

The newsletter also contains a number of useful contacts should you or anyone in your family need support in these challenging and uncertain times.

We have also included the new school day which all pupils, regardless of their year group need to follow whilst we are working remotely. The guide to safer live lessons is also included and I would remind everyone to read this.

We were delighted that our Ofsted letter was published this week. In line with what Ofsted are doing nationally, this was a visit to see how reopening after COVID-19 was going. (It seems strange to be saying that when most of our pupils are out of school once again!) I am pleased that all of our hard work was recognised and hope you are pleased with the overview it provides for you as parents and guardians. Any questions please do not hesitate to contact us at [admin@hillsidehigh.co.uk](mailto:admin@hillsidehigh.co.uk)

Mrs Amanda Ryan, Principal

## The School Day

Time	Event
9.00am – 10.00am	Lesson 1
10.00am – 10.15am	Break
10.15am – 11.15am	Lesson 2
11.15am – 12.15pm	Lesson 3
12.15pm – 12.45pm	Lunch
12.45pm – 1.45pm	Lesson 4
1.45pm – 2.00pm	Afternoon Break
2.00pm – 3.00pm	Lesson 5



Hillside High School  
Read our report here:  
[https://www.hillsidehigh.co.uk/academy\\_information/ofsted/](https://www.hillsidehigh.co.uk/academy_information/ofsted/)

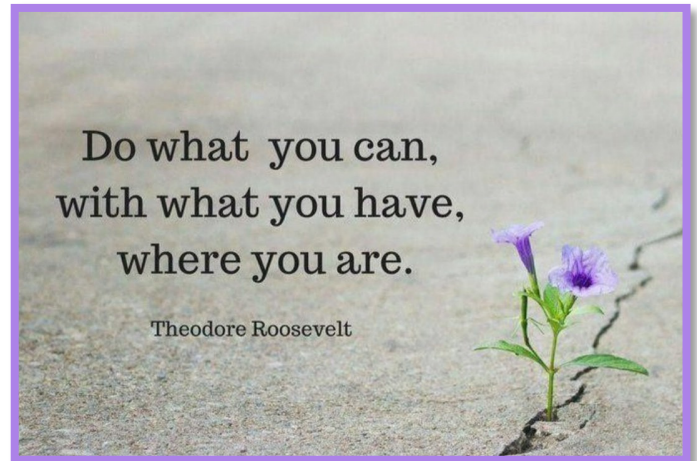




## Service and Resources

We are once again so proud of the resilience and positivity shown by our whole school community. Our Progress Leaders and pastoral staff continue to make calls to families to check in and make sure that pupils are as ok as can be under the circumstances. Can we remind you that our school office is open for phone calls, and you can telephone with any enquiries 8.30am to 3.00pm. Please don't feel any question is too trivial, and if you need any support we are here to help.

In addition, please see again some useful contacts within the community that may be useful in supporting families at this time.



**Childline** 08001111

**NSPCC-** [www.nspcc.org.uk](http://www.nspcc.org.uk) 08448920264 (Liverpool Office) NSPCC Helpline 08088005000

**cruse.org.uk-** coping with a bereavement

[www.trusselltrust.org](http://www.trusselltrust.org) -Foodbank

**South Sefton Foodbank**—0151 933 1300

**Liverpool Social Care**- 233 3700

**Sefton Social Care**- 0845 140 0845

**SWACA**—Monday-Friday 9.30am—5.00pm, Tel: 0151 922 8606, [www.help@swaca.com](mailto:www.help@swaca.com)

**The Life Rooms**—0151 478 6556

**National Domestic Abuse Helpline**—0808 2000 247, [www.nationaldahelpline.org.uk](http://www.nationaldahelpline.org.uk)

**South Sefton Food Bank**—St Leonard's Youth & Community Centre, 60 Peel Road, L20 4RW, [infor@southseftonfoodbank.org.uk](mailto:infor@southseftonfoodbank.org.uk)—Tel 0151 933 1300

**Sefton CAMHS Support**—Alder Hey Crisis Care Team has a 24 hours a day, 7 days a week helpline. 0151 293 3577 or freephone 0808 196 3550

**Parenting 2000**—Counselling and Family Support, [www.parenting2000.org.uk](http://www.parenting2000.org.uk), [info@parenting2000.org.uk](mailto:info@parenting2000.org.uk), Tel 07834 524 956 or 07464 544 314

**Safe Regeneration**—Waverley Street, Bootle L20 4AP—Please visit facebook page and leave a message.

**SWAN Women's Centre**—Twitter, Facebook and Instagram pages.



## Hillside High School A guide to safer LIVE LESSONS



An online lesson occurs when teachers use video conferencing software to 'livestream' lessons. At Hillside we will use Microsoft Teams as the platform for streaming lessons. The opportunity to 'livestream' lessons provides an excellent opportunity to maintain high quality education remotely as it allows learning to take place anywhere with an internet connection. However, live lessons are new to us all as a school community and it is important to read thoroughly the information, we have put together below to make sure that learning can take place in a safe manner for all involved.

### What teachers need to consider



#### Conduct

If you are hosting an online lesson, it is important that you maintain a level of professionalism and treat any online lesson in the same way you would treat a classroom lesson. Dress appropriately and find a setting which has a suitable background (ideally in a classroom, but if working from home would need to consider the background carefully, having no personal information on show). Remind pupils at the start of the lesson of acceptable behaviour and their conduct during the class. It is worth remembering that live streaming means screenshots and videos recordings of your lesson could occur so it is important to maintain professionalism at all times.

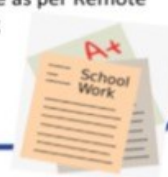
#### Communication

Hosting a live lesson means that you will have to think about how you communicate carefully. We use Microsoft Teams for all communication with pupils. We have chosen this as we know it is a secure platform with the relevant privacy and security settings in place. Any contact should only through Microsoft 365 and not through any personal accounts. During the live lesson pupils are permitted to only communicate with you via the chat box.



#### Content

Planning your content will be a key factor to consider prior to hosting an online lesson. It is important to ensure that all content is suitably pitched, just as you would when planning a normal lesson. Content should be aligned to the Curriculum Learning Journey. It is advisable to not set pupils off to research using the internet but rather provide links to specific websites which have been checked for suitability. Lessons should follow the guidance as per Remote Learning protocol; teaching segment (using expert instruction and guided practice), assessment task, feedback.



### What parents need to consider

#### Conduct

It is important to remind your child that despite being at home, the same level of behaviour and conduct exists as if they were at school. Encourage them to remain polite and remember their manners. If at all possible position them in an open environment where you can monitor their activity, preferably not in a bedroom. Remind your child that they should make sure their camera and microphone is switched off for during the lesson, all communication should be via the chat box facility.



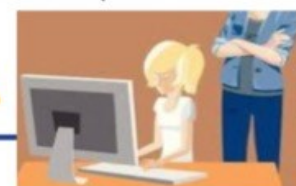
#### Communication

If your child is part of an online lesson they may need some support in getting set up, however, pupils have been trained in using Microsoft Teams in their lessons at school. You will find a guide on our website, within our Remote Learning section to support with this. It is worth you looking and being aware of the platform and how it works so you can understand the security and privacy settings and how to switch on and off cameras and microphones. We ask you to make sure you raise any concerns immediately with school if you are unable to accommodate online lessons or if you have any concerns regarding the provision.



#### Content

Try to take an interest in your child's live lesson if you are available to do so. Talk to them about who is hosting the lesson and what the lesson is about. Remind your child about being careful if searching the internet for information, if possible ensure parental controls are in place and remind pupils that their teacher will always recommend links to suitable and accurate internet sources if these are required.



### What pupils need to consider

#### Conduct

Being able to access lessons live online is a great way to learn remotely, it is important that we all follow the correct rules and behave appropriately to allow everyone to access the lesson. You should behave with the same level of respect for your peers and teacher that you show in a normal lesson. During live lessons you must switch off your camera and microphone if you have one. When communicating with the teacher on the chat function all comments must be relevant and linked to learning. Any inappropriate comments will mean that you will be subsequently muted by your teacher meaning you can watch the lesson but cannot communicate with your teacher using the chat function.

#### Communication

Hosting a live lesson means that you will have to think about how you communicate carefully. We use Microsoft Teams for all communication with pupils. We have chosen this as we know it is a secure platform with the relevant privacy and security settings in place. Any contact should only through Microsoft 365 and not through any personal accounts. During the live lesson pupils are permitted to only communicate with you via the chat box.



#### Content

The most important thing about online lessons is that you engage fully with the content. Your teacher is teaching you new knowledge and skills and in order to learn effectively you need to pay attention. We have learnt in school that learning will only happen if you pay sole attention to the new content. Switch off all other devices so you can focus on just the one lesson. You will be learning content and skills that is part of your normal school curriculum, it is important to work just as hard at home as you would do in school to ensure that you do not fall behind.





## Times Tables Rockstars

A massive well done to our TT Rockstars  
this week, they are:

### Year 7:

*Joshua W 7THE, Loic N 7GW  
and Callum S 7RS*

### Year 8:

*Jessica H 8SE, Meghan M 8RLC  
and Matilda A 8RLC*



Miss Christian

## FOLLOW US ON SOCIAL MEDIA



[facebook.com/hillsidehs](https://facebook.com/hillsidehs)

[@hillside\\_high\\_school](https://www.instagram.com/hillside_high_school)



[@hillside\\_high](https://www.twitter.com/hillside_high)

'Excellence in the Heart of the Community'

Parent View gives you the chance to tell us  
what you think about Hillside High School.

Leave your feedback at [www.parentview.co.uk](http://www.parentview.co.uk)

Excellence in the Heart of the Community

